

**PRODUCT DETAILS**

<b>PRODUCT CODE</b>	<b>SMF65R</b>
<b>WARRANTY</b>	40 months (Private Passenger Use) *
<b>CHARACTERISTIC</b>	Sealed Maintenance Free Lead Acid Battery
<b>GROUP SIZE</b>	LB2
<b>CASE AND LID</b>	Material : Polypropylene (PP)
	Handle : 2 pc Plastic
	Ledges : End and Front Ledge (EL & FL)
	Venting System : Centralized system with Degassing vents on sides



**DIMENSIONS, WEIGHT, AND LAYOUT**

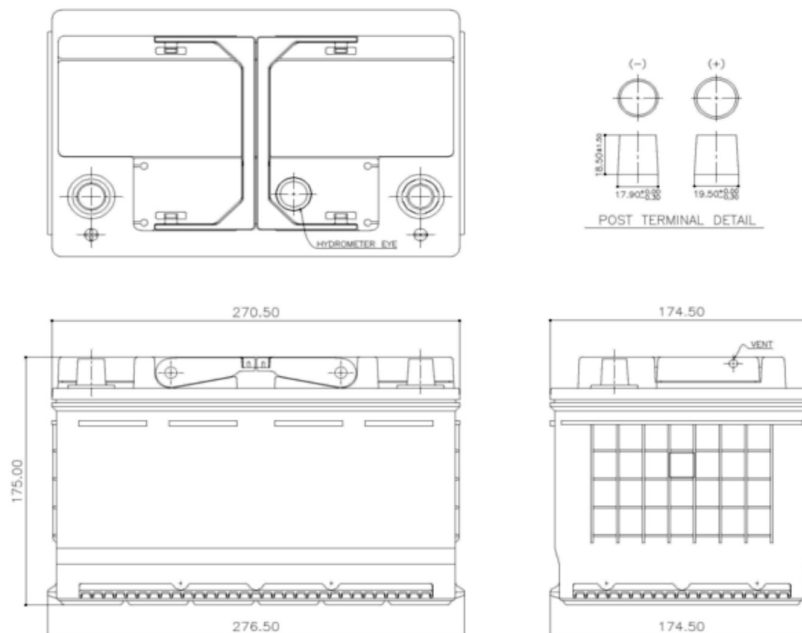
OVERALL DIMENSIONS	METRIC
<b>LENGTH, mm</b>	271
<b>WIDTH, mm</b>	175
<b>CASE HEIGHT, mm</b>	153
<b>TOTAL HEIGHT, mm</b>	175
<b>APPROXIMATE WEIGHT, kg</b>	16.45

TERMINAL DATA	METRIC
<b>TYPE</b>	SAE
<b>TERMINAL HEIGHT, mm</b>	18.5±1.5
<b>BOTTOM DIAMETER, mm</b>	Positive: 19.5+0/-0.3 Negative: 17.9+0/-0.3
<b>TAPER</b>	1:9
<b>POLARITY</b>	D (Positive Left)

**CAPACITY SPECIFICATIONS**

<b>COLD CRANKING AMPS (CCA)</b>	670 CCA
<b>AMPERE-HOUR AT 20-HOUR CAPACITY</b>	75 Ah
<b>RESERVE CAPACITY (RC)</b>	120 mins

<b>MAX CHARGING VOLTAGE</b>	14.8 V at 25°C
<b>FLOAT CHARGING VOLTAGE</b>	13.5 V – 13.8 V at 25°C
<b>OPERATING TEMPERATURE</b>	-40°C to 80°C** Optimal Temperature: 25°C ± 5°C



\*Warranty upon registration /Warranty terms and conditions apply.

\*\*Based on normal engine bay temperature.

(Note) The company reserves the right to update the information above without prior notice.